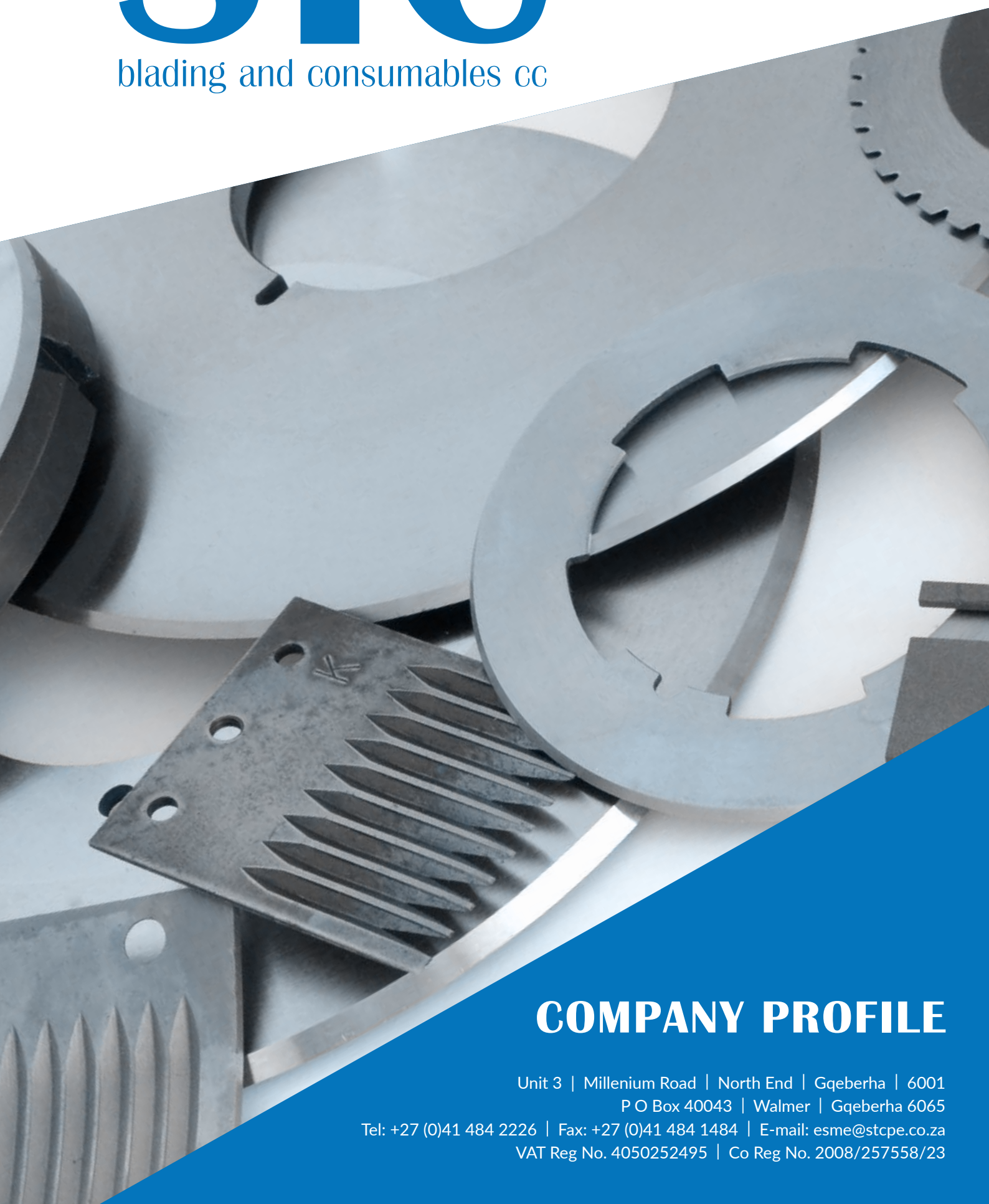




blading and consumables cc



COMPANY PROFILE

Unit 3 | Millenium Road | North End | Gqeberha | 6001

P O Box 40043 | Walmer | Gqeberha 6065

Tel: +27 (0)41 484 2226 | Fax: +27 (0)41 484 1484 | E-mail: esme@stcpe.co.za

VAT Reg No. 4050252495 | Co Reg No. 2008/257558/23

Index

Vision & Mission Statement..... 2

Exclusive German OEM wear- and spare parts for the corrugated board industry 3-4

Paper Cutting Blades 5

Food Industry 6

Tyre Industry 7-9

Packaging Industry 10

General Blades & Consumables..... 11

Our Services 12

BEE Scorecard..... 13

Introduction

STC Blading and Consumables C.C. is a specialised industrial blading and specialised tooling partner based in Port Elizabeth. It offers a range of blade cutting and sharpening solutions as well as welding consumables, which encompass these areas:

NAME	INDUSTRY	CUSTOMERS
Industrial Blades	Tyre Rubber	Bridgestone, Continental, Decramat, Dunlop Belting Products, Sumitomo Rubber
Slitter	Paper Plastic	Mpact, Aberdare Cables, Bukani Print, Paarlcoldset, Rhino Group, Valmac Printers
Industrial Knives	Packaging	Mondelez, Summerpride Foods, Tiger Brands, Georgio’s Biscuits
Form Tools Tungsten Dies	Motor	Armstrong Tenneco
Welding Consumables and Industrial Blades & Knives	Tanker Building	Welfit Oddy
Elevator/Conveyor Buckets	Confectionary	Chapelat Swaziland, Mondelez

Based on 20 years’ experience, STC Blading and Consumables C.C. is able to offer a wide variety of blade cutting and sharpening solutions, to the manufacturing sector of the Southern African economy.

Vision and Mission

STC Blading and Consumables C.C. is dedicated to becoming a leading South African blade cutting and sharpening solutions provider, employing highly skilled personnel and offering world class solutions that solve our client’s cutting and sharpening concerns.

Our mission is to build a fast-growing and successful company that provides the Manufacturing Industry in Southern Africa with solutions relating to their cutting and sharpening requirements, using personnel that are experts in their field.

Values and Philosophies

We operate within strict legal and ethical guidelines and we display honesty and fairness in all our dealings with others.

We commit ourselves to the transformation agenda of the current South African situation and will contribute towards this opportunity. People are the source of our strength and our competitive advantage. We respect and encourage each individual to be creative. The company rewards hard work and continuous self-improvement.

Value Added Services

STC Blading and Consumables C.C. has built up through its many years of experience in the field of blade cutting and sharpening a core competency, to satisfy the many challenges that cutting and sharpening of materials can bring.

The competitive advantages that we display are:

- ▶ Service excellence
- ▶ Technical expertise
- ▶ Cost effective solutions to cutting and sharpening challenges
- ▶ Knowledge and management of the risks

One of our strengths is to provide cost effective solutions that embraces the wide area of blade cutting and sharpening.

Skills

The Company management and staff have years of in-depth experience in blade cutting and sharpening solutions and the method of applying the solutions to best suit the client’s particular business.

We only employ dynamic, self-starters who are able to learn and grow with the Company. We strive to hire from the previous disadvantaged groups and we invest heavily in the training of our staff.

BEE Scorecard

STC Blading and Consumables CC has a level 4 BBBEE status.

Company Details

Vat Reg No: 4050252495
Paye No: 7870772151
Inc Tax No: 9005802195
Co Reg No: 2008/257558/23
UIF No: 21016361
W/Mans Comp: 990000626792

Should you require any further information, please do not hesitate to contact Esmé Maybery or Elton Joshua.

September 2013

Dear Valued Customer

We have been appointed as sole agent in South Africa, by a German company who has been in operation for over 25 years, to supply high quality OEM (original equipment manufacturer) wear- and spare parts for the corrugated board industry.

The focus is on MARTIN, EMBA, AGNATI, BHS and BOBST machines, but we are also able to supply parts for many other (less common) machines.

Most of the parts are available ex-stock to ensure a speedy delivery time.

On the right are some photos of the more commonly used parts i.e.

We look forward to being of further assistance to you, and welcome your enquiries regarding our competitive pricing or any other information you may require.

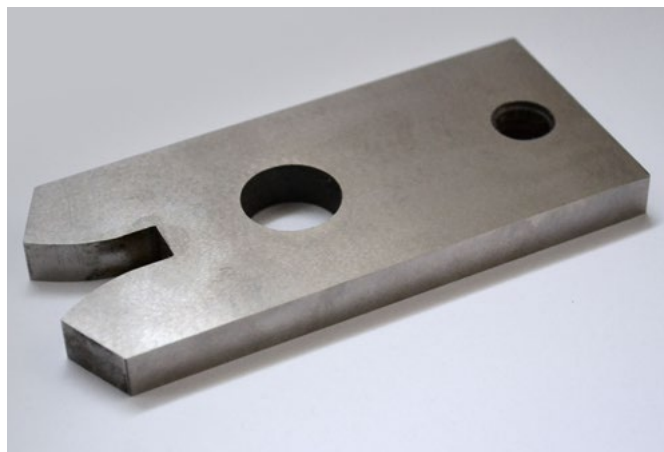
The **STC Blading and Consumables** Team

Members: R. Price CA(SA), W. Groenenstein, E Maybery, E Joshua



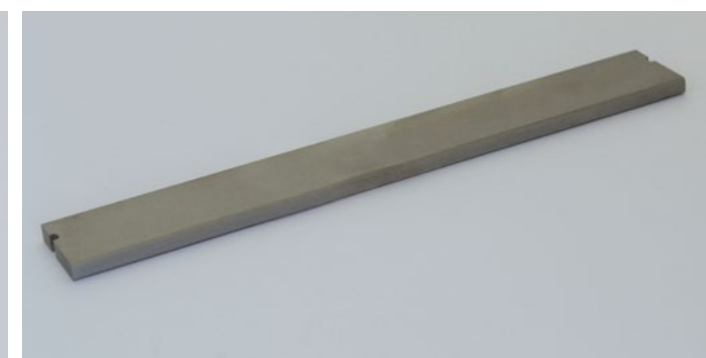
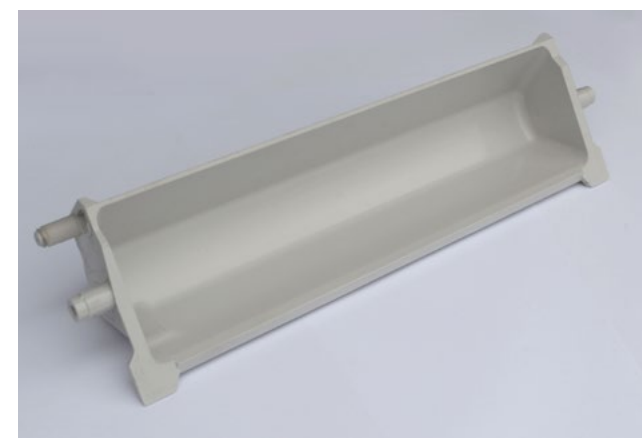
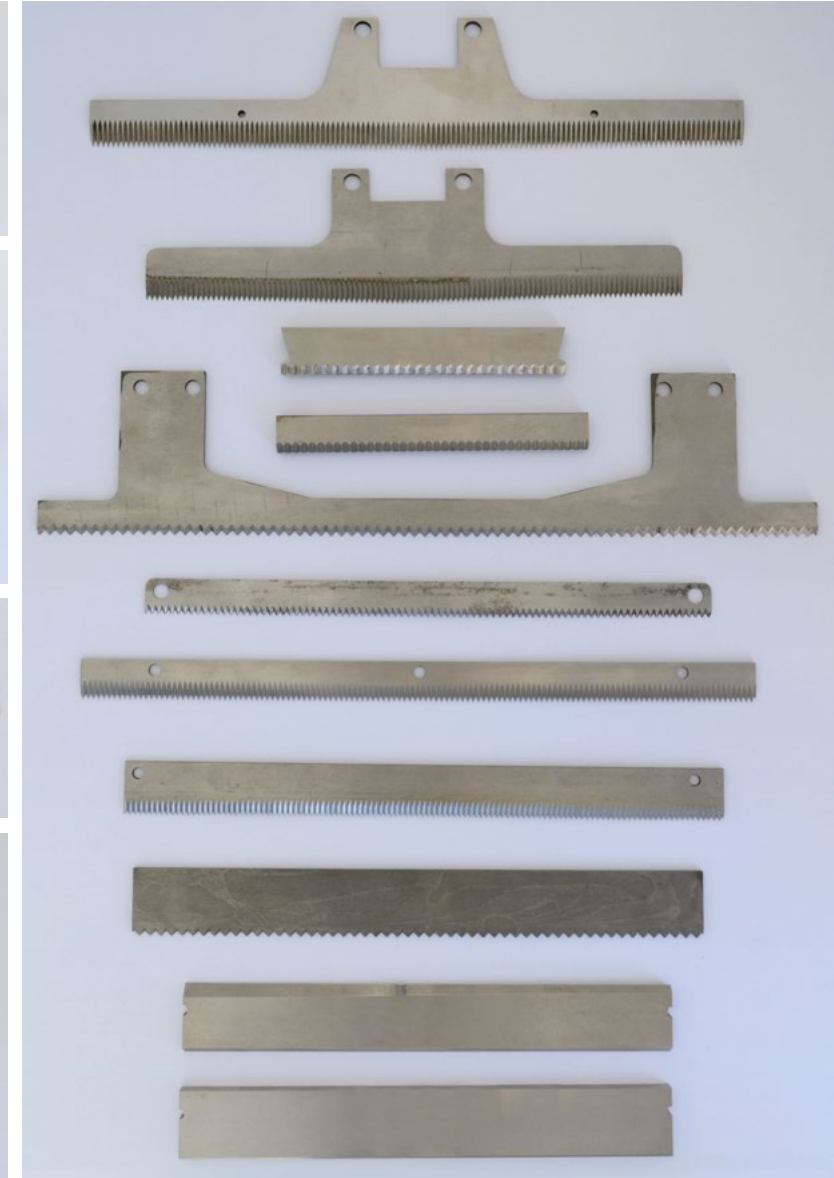
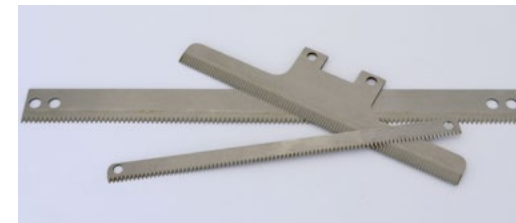
PAPER CUTTING BLADES

We have an extensive range of blades for the paper industry and our products are not limited to the examples.



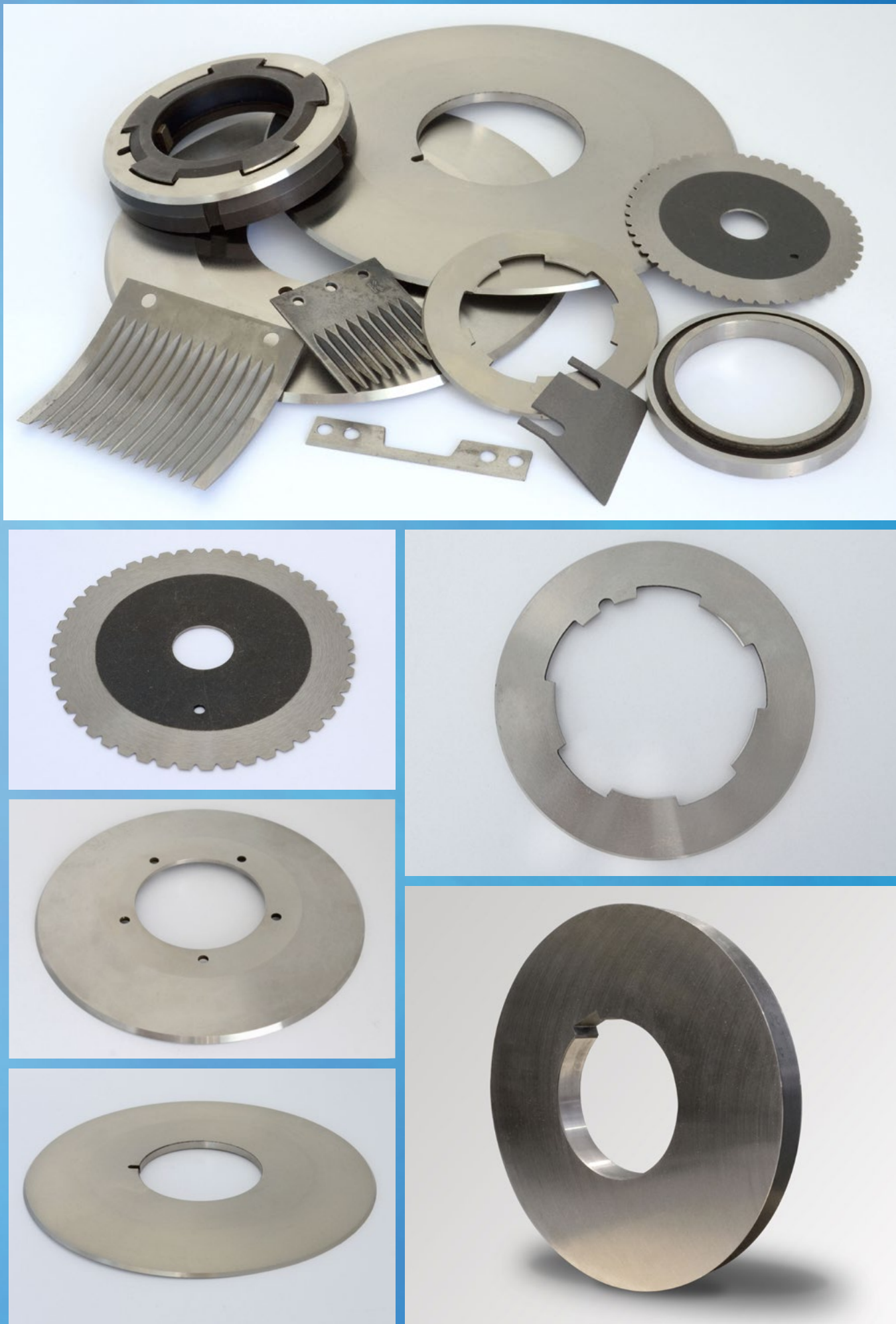
FOOD INDUSTRY BLADES

Below are a few examples of the vast selection of blades we have available for the food industry.



TYRE INDUSTRY BLADES

We have an extensive range of blades for the tyre industry and our products are not limited to the examples.

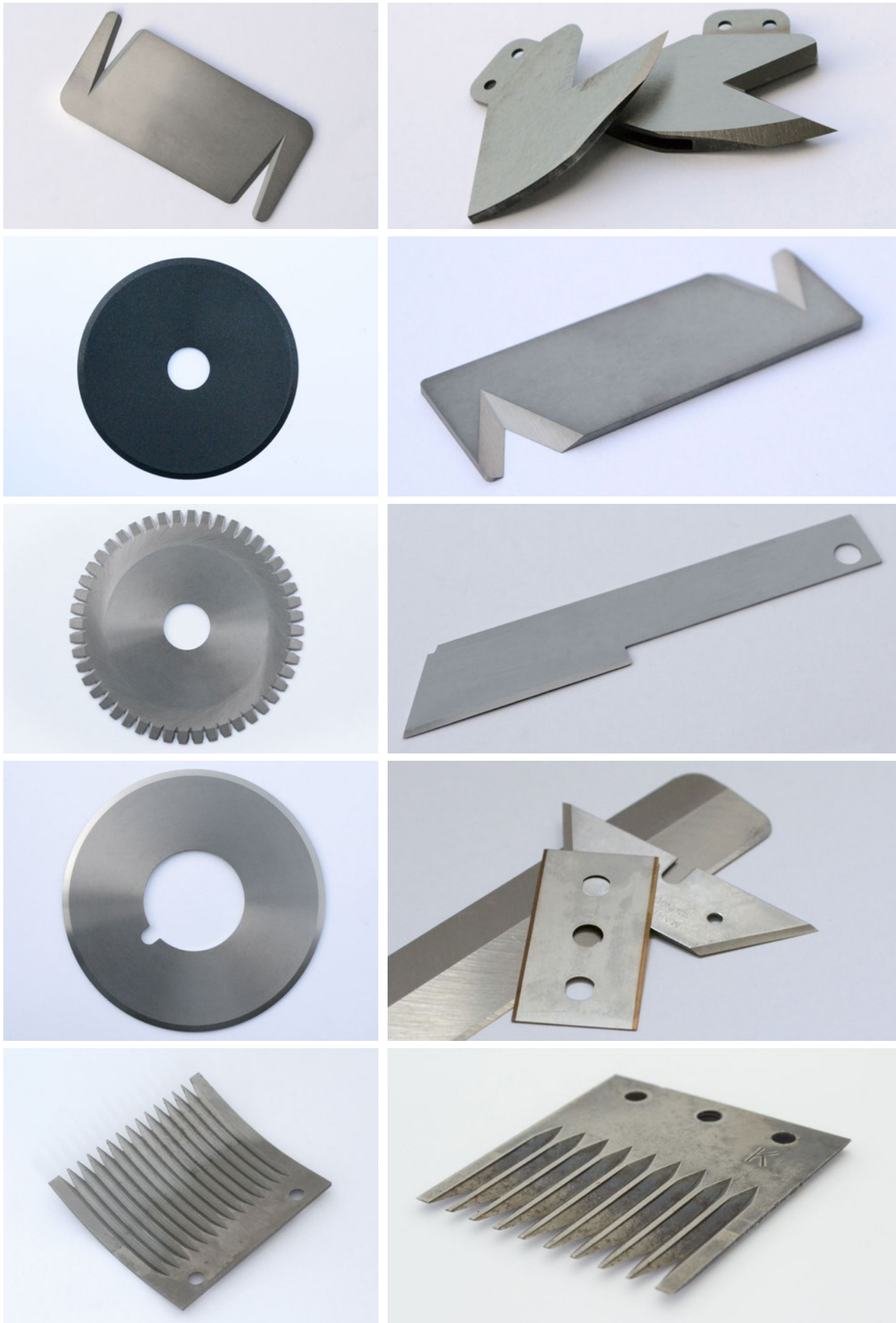


TYRE INDUSTRY BLADES



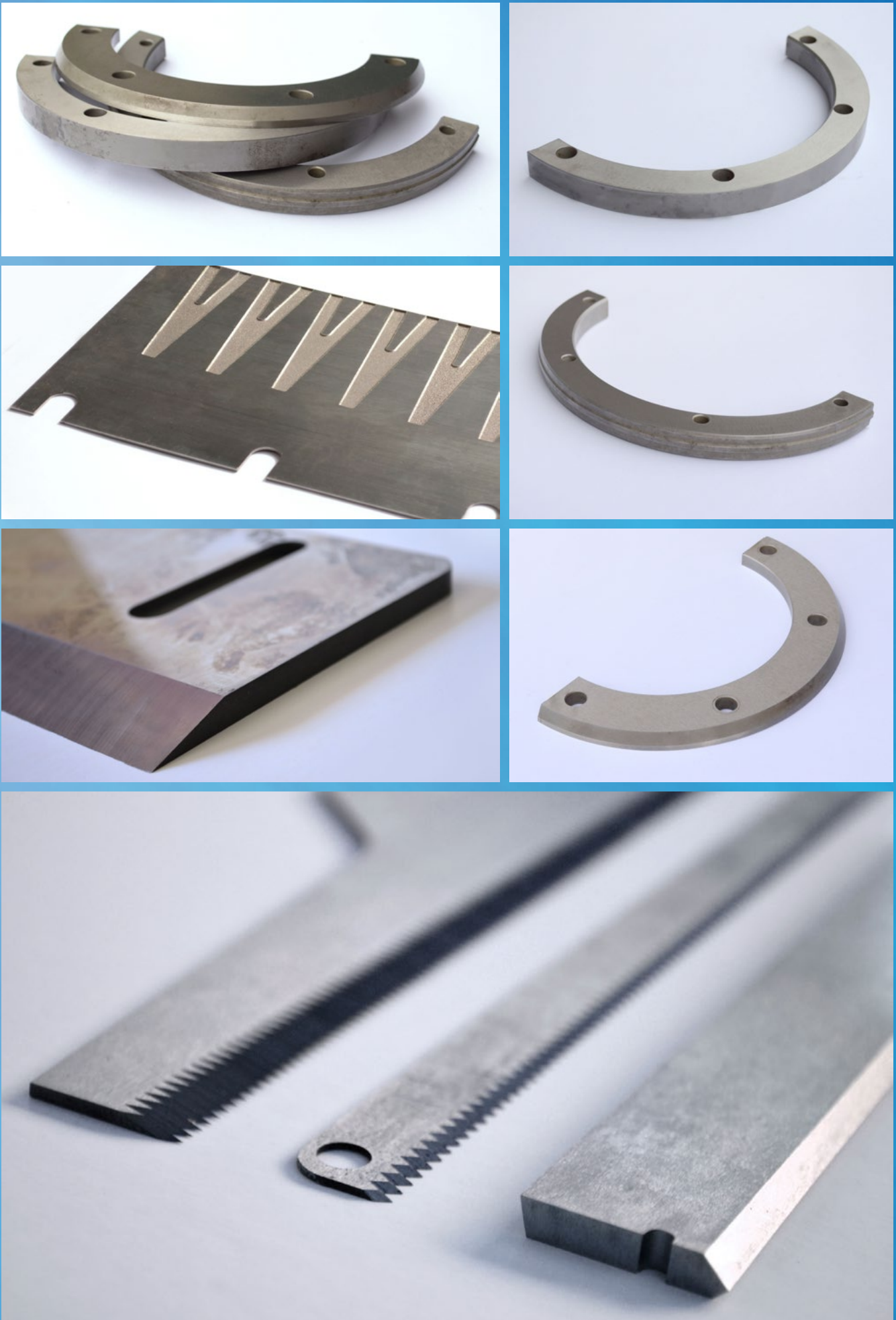
TYRE INDUSTRY BLADES

We have an extensive range of blades for the tyre industry and our products are not limited to the examples.



PACKAGING INDUSTRY BLADES

Our variety of packaging blades is very wide and not limited to examples shown below.



GENERAL

We offer a vast range of blade cutting and sharpening solutions as well as welding consumables. Contact us for more information regarding your specialised tooling needs.



PROTECTA SEAL
A non-toxic hot melt removable plastic protective coating for many surfaces including metals, wood, glass and ceramics.

APPLICATIONS
Protecta Seal can be applied in limitless applications including protection of machine tools from nicks, cuts, corrosion and moisture.

Protecta Seal coatings are safe. They contain no VOC's, are non-toxic and are landfill safe for disposal.



BLADE SHARPENING

Various blades including:
Guillotine Blades | Planer Blades | Zig Zag Knives | Anvil's for Blades | Clipper Blades



SURFACE GRINDING

We have a grinding service available to grind most types of flat plate to size
Bed size: 3100mm x 460mm | **Wheel Diameter:** 500mm
Enquire about your specific needs and we can review



SWORN AFFIDAVIT – B-BBEE EXEMPTED MICRO ENTERPRISE

I, the undersigned,

Full name & Surname	Esmé Maybery
Identity number	5804150062081

Hereby declare under oath as follows:

1. The contents of this statement are to the best of my knowledge a true reflection of the facts.
2. I am a member / director / owner of the following enterprise and am duly authorised to act on its behalf:

Enterprise Name	STC Blading and Consumables CC
Trading Name	N/A
Registration Number	2008/257558/23
Enterprise Address	Unit 3, Millenium Road North End Port Elizabeth 6001

3. I hereby declare under oath that:
 - The enterprise is _____ 10 _____ % black owned;
 - The enterprise is _____ 0 _____ % black woman owned;
 - Based on the management accounts and other information available on the **2021** financial year, the income did not exceed R10,000,000.00 (ten million rands);
 - Please confirm on the table below the B-BBEE level contributor, **by ticking the applicable box.**

100% black owned	Level One (135% B-BBEE procurement recognition)	
More than 51% black owned	Level Two (125% B-BBEE procurement recognition)	
Less than 51% black owned	Level Four (100% B-BBEE procurement recognition)	√

4. The entity is an empowering supplier in terms of **the dti** Codes of Good Practice.
5. I know and understand the contents of this affidavit and I have no objection to take the prescribed oath and consider the oath binding on my conscience and on the owners of the enterprise which I represent in this matter.
6. The sworn affidavit will be valid for a period of 12 months from the date signed by commissioner.

Deponent Signature:

Date: 2022-01-18

Esmé Maybery

[Signature]
Commissioner of Oaths
Signature & stamp
[Signature]

